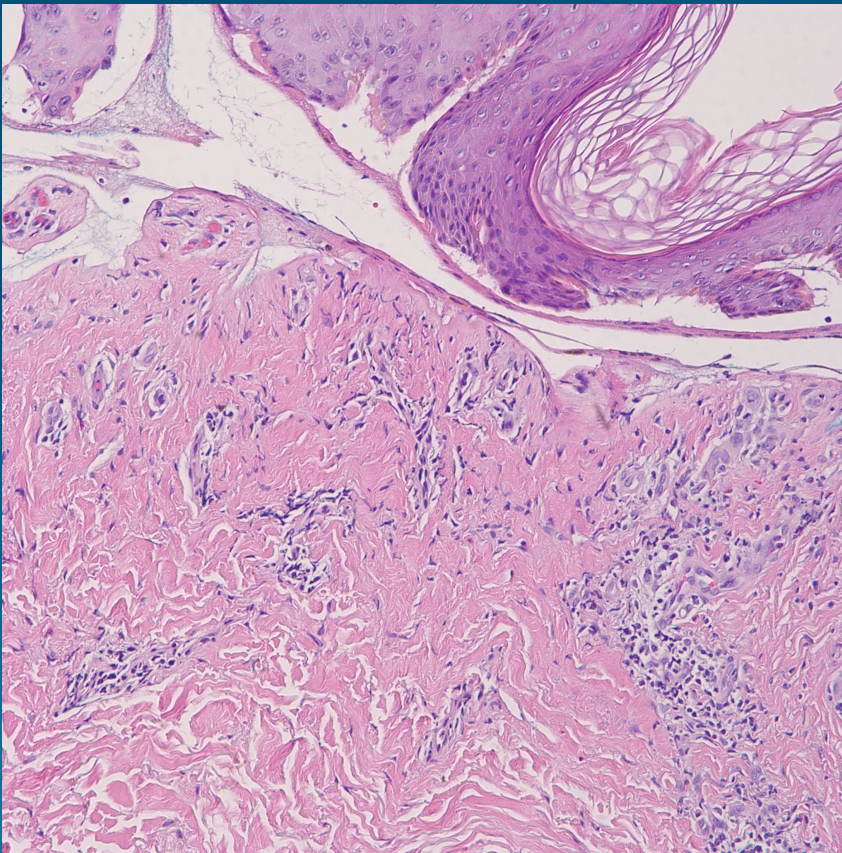


What is the best diagnosis?

- A. Pemphigus vulgaris
- B. Pemphigus foliaceus
- C. Grover's disease
- D. Dermatitis herpetiformis
- E. Bullous pemphigoid

Bullous Pemphigoid

Pearls



- Subepidermal bulla
- Superficial perivascular and interstitial infiltrate of eosinophils predominating over neutrophils
- Later lesions may show re-epithelialization of the blister base, mimicking an intraepidermal bulla